

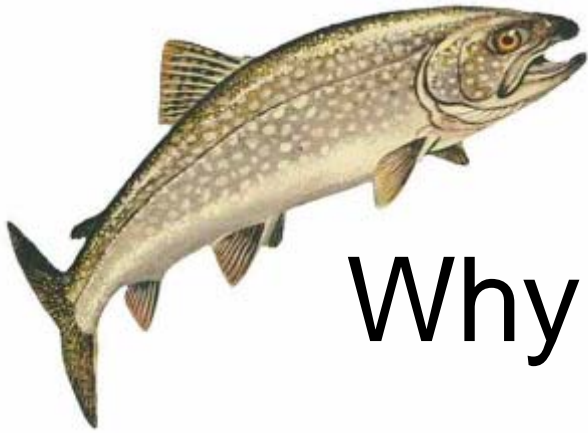
A large lake trout with a dark, spotted pattern on its body and a reddish-orange stripe along its side is swimming in clear water over a rocky bottom. Another smaller lake trout is visible in the background.

Lake Trout Strategy for the Bancroft-Mazinaw Area

A Work in Progress!

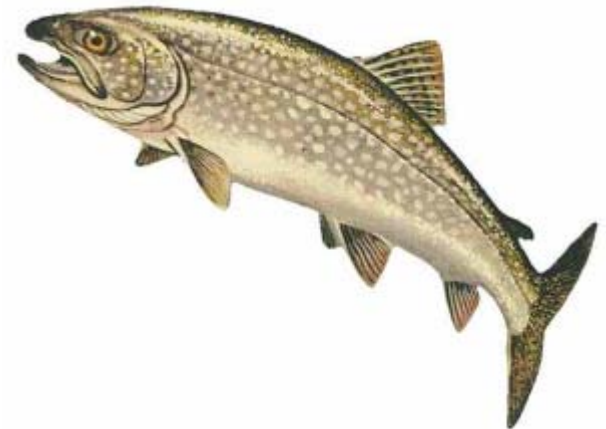
NHCFH Annual General Meeting

January 23rd, 2009



Why another strategy?

- Implemented SCR lake trout strategy in 1995 using “best available knowledge”
- In the past 11 years, new knowledge and new science has come to light
 - New knowledge: climate change, introduced species
 - New science: genetics



Another strategy.....

- Despite implementation of SCR lake trout strategy, populations continue to decline
 - Angler dissatisfaction
 - Low CUE
- In light of new knowledge and science, continued declining populations means a huge RISK that we may be losing irreplaceable genetic strains



Lake Trout Strategy for Bancroft-Mazinaw Area

Goals, Objectives and Strategies to Get Us There

Goal: To manage native lake trout fisheries in an ecologically sustainable manner to ensure they are available for the enjoyment and use of present and future generations



Goals, Objectives and Strategies to Get Us There

Objectives:

- Conserve native biodiversity of lake trout populations and protect unique genetic stocks
- Rehabilitate and restore native populations where possible
- Ensure sustainable harvest
- Provide and enhance angling opportunities, improve angler satisfaction and involvement
- To contribute to the social and economic benefits of the local community
- To educate the public about the characteristics of lake trout fisheries, sustainable harvest levels, key stressors on lake trout fisheries, the various management tools and their effectiveness and how they can get involved.

Strategies to Get Us There.....

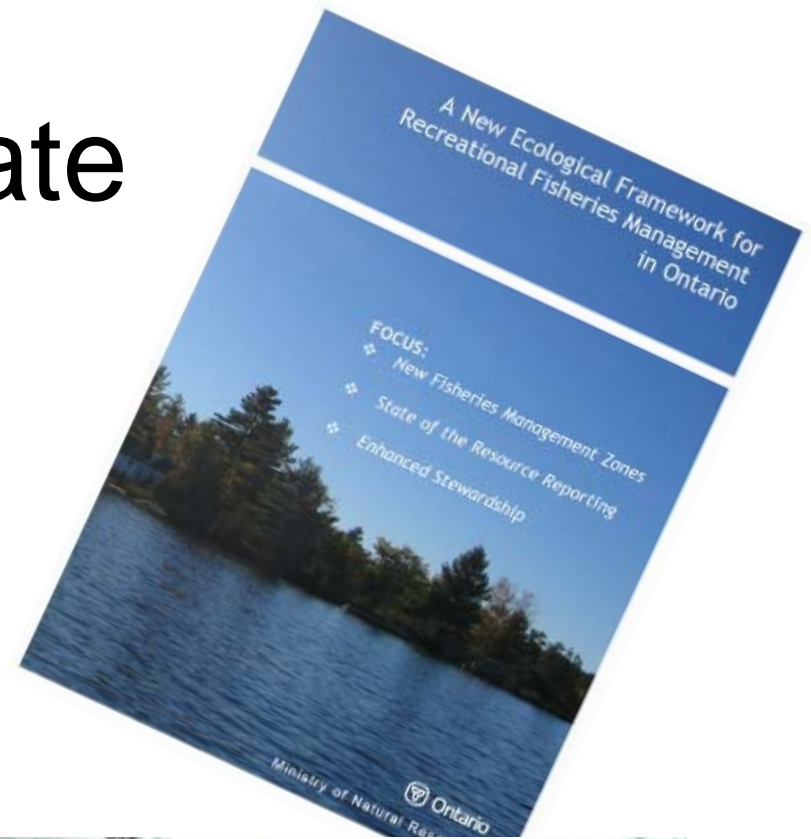
Strategies:

- Volunteer data collection program
- Lake assessment program
- Data analysis and reporting
- Rehabilitation
- Monitoring program



Progress to date

- New Ecological Framework for Fisheries Management; re-examining all regulations, exceptions and species tool kits; FMZ councils to be set up within a year
 - Changes implemented in FMZ 18; FMZ 15 council to come soon
- Prepared lake trout strategy and SOR for Bancroft District
- Genetics and climate change research is on-going
- Assessment and monitoring program well established
- Rehabilitation plan underway



Lake Trout State of the Resource (SOR)

- 67 “native” lake trout fisheries; many historic “extinct” populations
- 24 Put grow and take fisheries
- Other possible “remnants”
- 44 lakes have been assessed using standard methods since 1995
- Average CUE is 0.3/hour
 - 19 lakes at or above “average”,
25 below “average”
- Genetic sampling and results (28 lakes awaiting plus 7 confirmed)



Lake Trout Assessment, Research and Monitoring Program

- BASC project-have completed 22 “SPIN” assessments since 2005
 - data used to develop SOR and rehab plans, etc
 - uses depth stratified 2 hour sets in water suitable for lake trout; live release; low catches
- Also have genetic and climate change research ongoing
- Have monitoring plan developed; includes angler diaries and ongoing netting



Lake Trout Rehabilitation Plan

- Principles: want success (genetics and suitable habitat), need protection (regs), not PGT fisheries, PATIENCE & TIME
- Criteria:
 - 1) Low CUE
 - 2) Adequate habitat (water quality and spawning)
 - 1) Adequate juvenile habitat
 - 2) Suitable fish community
 - 3) Volunteer support!!



Rehabilitation cont'd

- Rehabilitation Plans
 - Not just stocking (although this is included)
 - Habitat (spawning shoal rehab, shorelines)
 - Fish communities (education, targeting other species)
 - Regulations (no wide open seasons, FMZ 15 council)
 - Monitoring (need follow up....this is where volunteers are needed!)



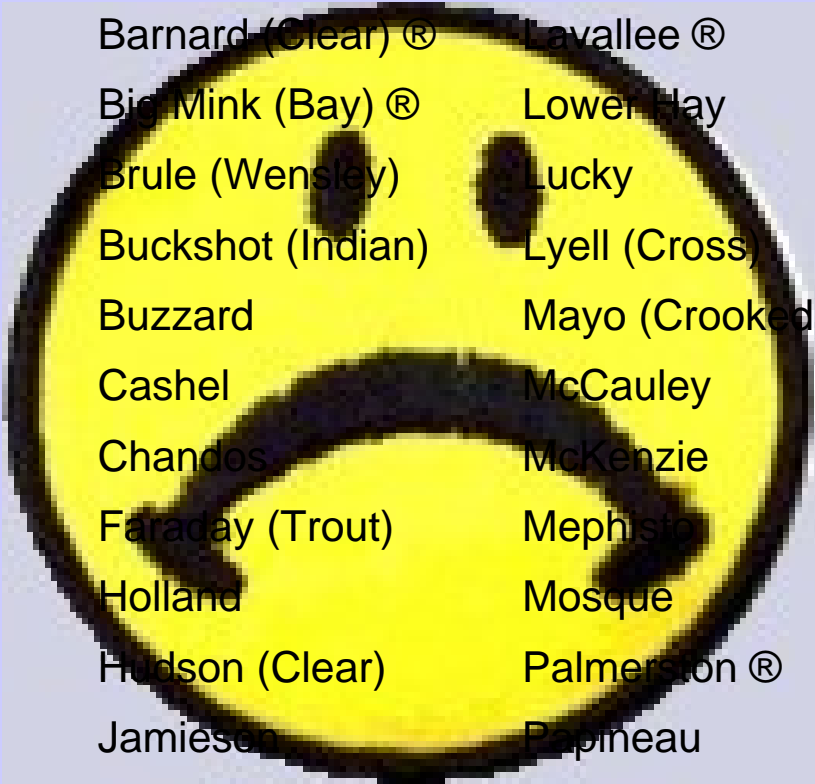
Progress.... 44 of 67 have standard assessments (23 to go)

16 above average



- Anstruther (Eagle)
- Ashby
- Aylen
- Crystal
- Deer
- Dickey
- Eels
- Galeairy
- Lin... (Bass)
- Lobster
- Long
- Mazinaw
- Weslemkoon
- Wollaston (Eagle)

28 below average



- | | |
|-------------------|----------------|
| Bay | L'Amable |
| Barnard (Clear) ® | Lavallee ® |
| Big Mink (Bay) ® | Lower Bay |
| Brule (Wensley) | Lucky |
| Buckshot (Indian) | Lyell (Cross) |
| Buzzard | Mayo (Crooked) |
| Cashel | McCauley |
| Chandos | McKenzie |
| Faraday (Trout) | Mephisto |
| Holland | Mosque |
| Hudson (Clear) | Palmerston ® |
| Jamieson | Papineau |
| Jeffrey | Paudash |
| Kishkebus (Dyers) | Purdy (Loon) |
| Lake St. Peter | Tallan |

Still to go....



Balfour ®

Baptiste

Barker (Bark)

Buck ®

Dixon

Effingham

Fox

Gliskning (Joe)

Grimsthorpe (Long)

Haskins ®

Joeperry (Wolf)

John

Leatherroot

Limestone

Mountain

Otter (Cotter)

Pusey (Dark)

Rainy

Silent (Pine)

Stoplog

Sucker

Thanet

Victoria

Rehabilitation Progress.....



- Bancroft Hatchery Initiative is well underway
- 2006 egg collections~1,000
 - 700 yearlings stocked in L'Amable in spring 2008
- 2007 egg collections~10,000
 - Will have approx. 5,600 yearlings for this spring; 2100 to L'Amable and 3500 to ???
- 2008 egg collections~13,000
 - 2100 to L'Amable and ???

L'Amable Rehabilitation

May 2008



Rehabilitation Stocking 2009

- Looking for next lake (s) for a 5-year rotation
- Must meet all criteria as previously discussed
- Options for consideration:
 - RED-suggest PGT
 - BLUE-suggest status quo
 - GREEN-suggest rehab
 - BLACK-still looking at these ones

Bay

Barnard ® (500)

Big Mink (Bay) ®

Brule (Wensley)

Buckshot (5200)

Buzzard

Cashel

Chandos

Faraday (Trout)

Holland (400)

Hudson (900)

Jamieson (600)

Jeffrey

Kishkebus (1000)

Lake St. Peter (2800)

L'Amable ® (2100)

*Lavallee (1200)

Lower Hay

Lucky (1200)

Lyell (Cross)

Mayo (Crooked)

McCauley (1400)

McKenzie

Mephisto

Mosque

Palmerston ® (6500)

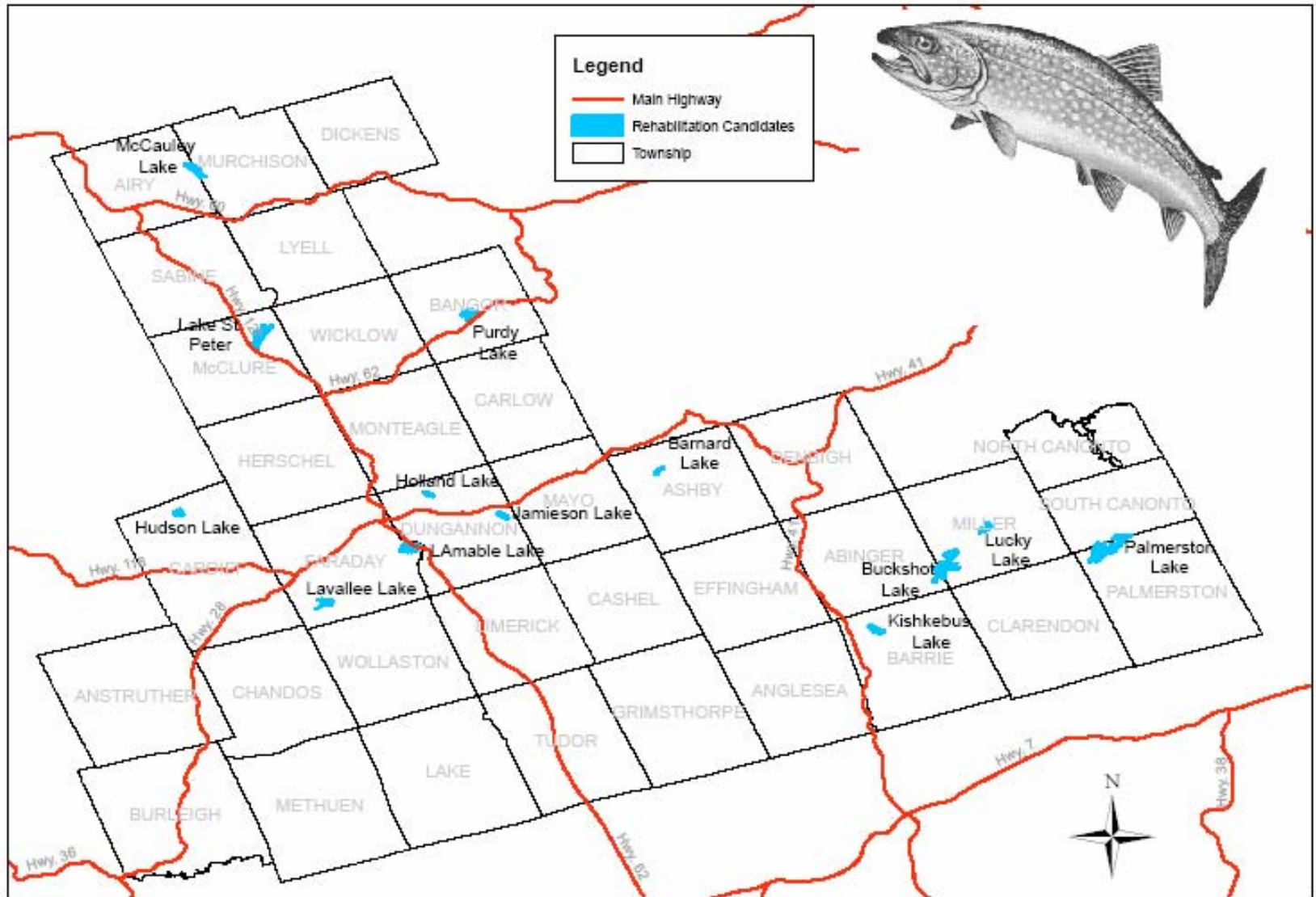
Papineau

Paudash

*Purdy (1600)

Tallan

Potential Candidate Lakes for Rehabilitation Stocking 2009



For More Information or to get involved:

Suzy Shalla Bancroft Stewardship Coordinator

613-332-3940 ext 260 www.ontariostewardship.org/Bancroft

Erin MacDonald at Bancroft MNR

613-332-3940 ext 259

QUESTIONS??

